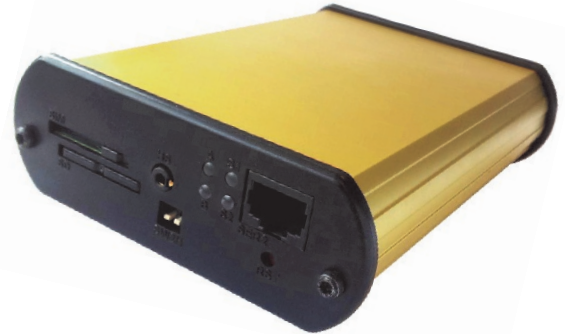


# RTCU MX2 turbo Starter kit

*The complete package to start developing*

The **RTCU MX2 turbo Starter kit** contains all the necessary parts to kick-start the development of the most advanced M2M/IoT applications.

Please download the RTCU IDE, technical manuals, tools and examples from **[www.logicio.com](http://www.logicio.com)**.



## RTCU MX2 turbo Starter kit, contains:

Quantity	Part#	Description
1	<b>RT-MX2T</b>	<b>RTCU MX2 turbo device.</b>
1	RT-O-MX2T-PSU	Power supply. 12VDC/1A.
1	RT-O-PCA-USB3	High-performance USB programming cable.
1	RT-O-GPSGSM-XG1	GSM/GLONASS/GPS antenna with 3 meter cable.
1	RT-O-SDC4G	Sandisk 4GB SD-CARD.
1	RT-O-RJ45SM	RJ45 to SUB-D9 male converter.
1	RT-O-1WM-IF2	Modular 1-Wire interface cable
1	RT-O-1WM-TEMP3	Modular 1-Wire temperature cable. 3 meter.
1	RT-O-1WM-IDRD3	Modular 1-Wire ID-button reader cable. 3 meter.
3	RT-O-1W-ID1	1-Wire ID-Button.
3	RT-O-1W-FOB1	1-Wire ID-Button fob in black.
1	RJ45-SPL2	RJ45 two-way splitter for 1-Wire use.
1	RT-O-TYCO-GOLD	Assortment of connectors/crimp contacts.

## Logic IO Worldwide Headquarters

Holmboes Allé 14  
 8700 Horsens  
 Denmark  
 Phone: +45 7625 0210  
 Fax: +45 7625 0211  
 Commercial enquiries: [sales@logicio.com](mailto:sales@logicio.com)  
 Technical support: [support@logicio.com](mailto:support@logicio.com)  
[www.logicio.com](http://www.logicio.com)