

# RTCU IEX

## *Instrumented Execution on Real Hardware!*

### For Professional M2M Development

The **RTCU Instrumented Execution (IEX)** stands as a pivotal extension to the **RTCU Integrated Development Environment (IDE)**, significantly amplifying the platform's capabilities for advanced runtime analysis and in-depth debugging of applications deployed on **NX32L**-based devices.

Architected for both rigorous development-time debugging and critical in-field analysis of elusive and intermittent issues, **RTCU IEX** represents a substantial technological leap.

The integrated **Insight!** tool provides unprecedented visibility into application behavior, while seamless integration with the **RTCU IDE** ensures a streamlined development and debugging workflow.

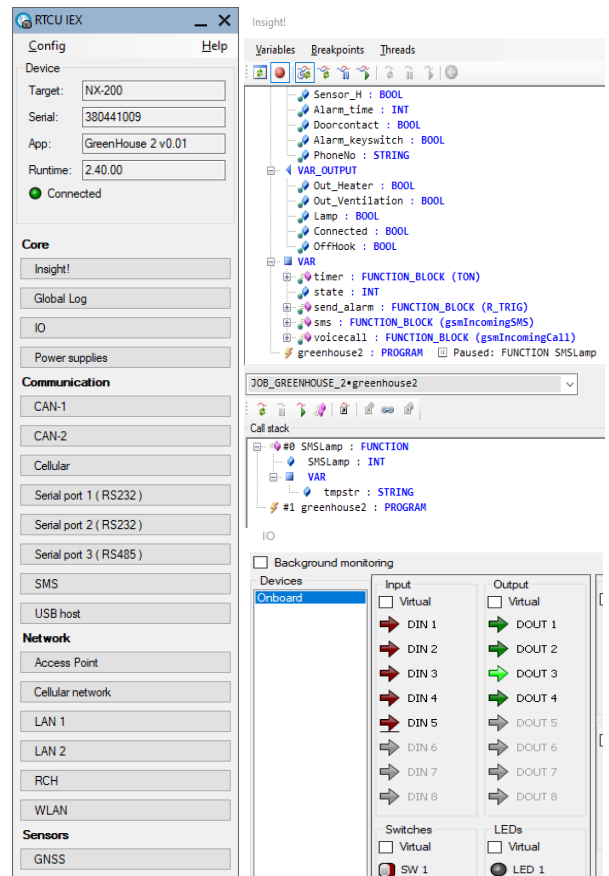
*More than 20 years of know-how in one product!*

### Experience and Know-how

Building on more than two decades of invaluable experience in the M2M/IoT field, Logic IO is committed to offering the most sophisticated platform for advanced and highly demanding applications.

Our products, including **RTCU IEX**, are the result of this accumulated experience combined with valuable feedback from professional and mission-critical applications deployed worldwide

RTCU products are deployed **underground, stationary, on the road, at sea, on the rail, and in the skies!** - In any imaginable application and environment.



### RTCU IEX Advantages

- ◆ **Debug on Real Hardware**  
Enables accurate, real-world analysis on physical NX32L devices, delivering insights beyond emulation.
- ◆ **Hardware Virtualization & Monitoring**  
Dynamically simulate and monitor I/O, CAN, GNSS, Serial, SMS, Network, Cellular, WLAN, USB, and more.
- ◆ **Insight!**  
Provides unprecedented visibility and control with live data views/edits, thread/stack manipulation, and breakpoints.
- ◆ **Integrated Workflow**  
Offers seamless RTCU IDE integration coupled with comprehensive logging capabilities.

## Find out more and start developing today!

Learn more about the **RTCU M2M platform** and start enjoying RTCU Technology today with the **FREE RTCU IEX!**

Also make sure to get the **FREE RTCU IDE** Development Environment, **RTCU Communication Hub**, and the **Deployment Server** to get a hands-on experience how rapid development/deployment of game changing M2M/IoT applications were meant to be.

Please visit [www.logicio.com](http://www.logicio.com)